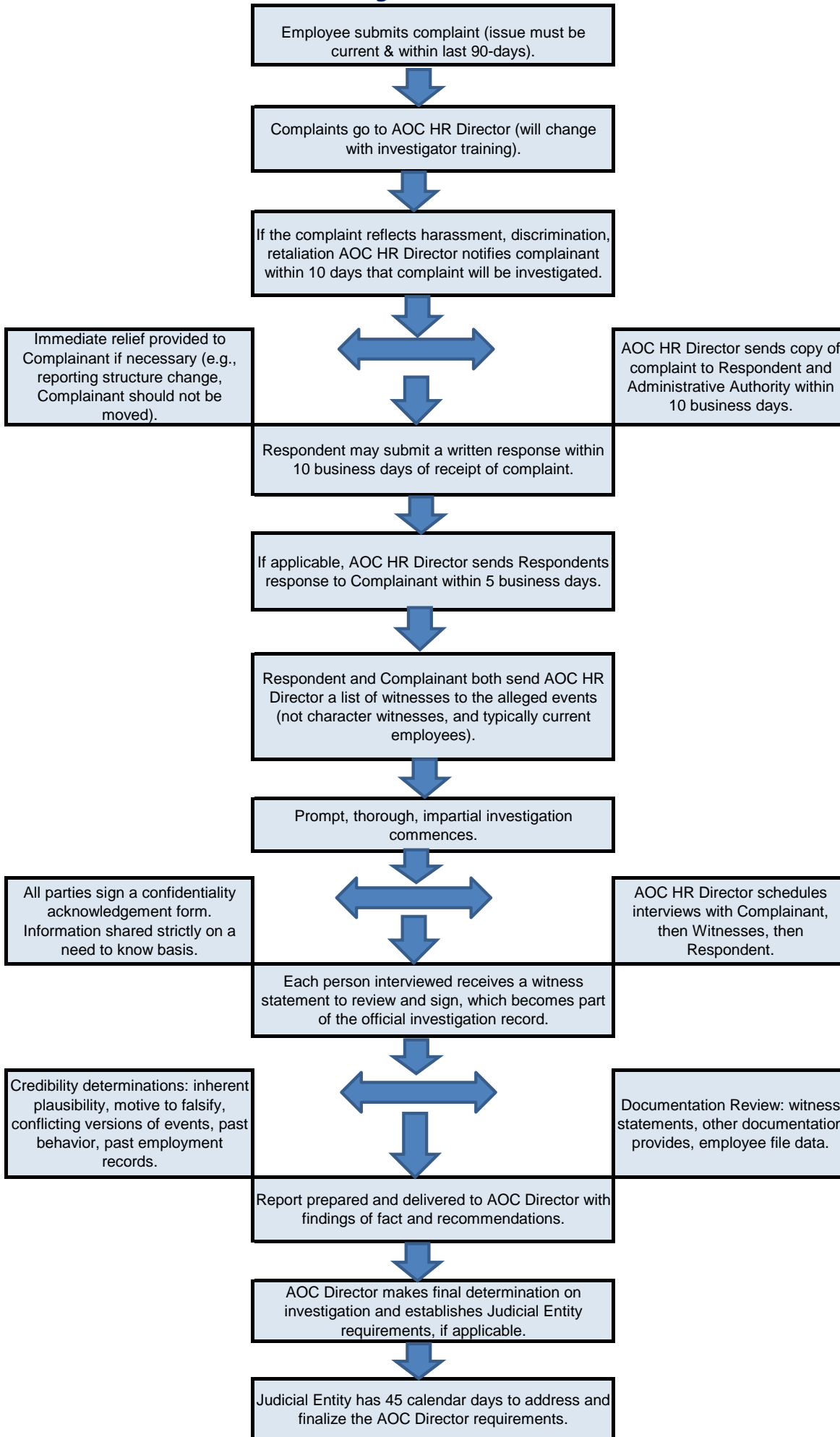


AOC HRD Investigation Process Flowchart



Chief Judges may or may not share information related to an investigation with other judges, all information is strictly on a need to know basis. Claims may be false, let the process take its course. Retaliation is often easier to prove than the initial complaint, and to the detriment of the Court. Goal is to demonstrate the employer exercised reasonable care to prevent and promptly correct the harassing behavior as soon as it was known.